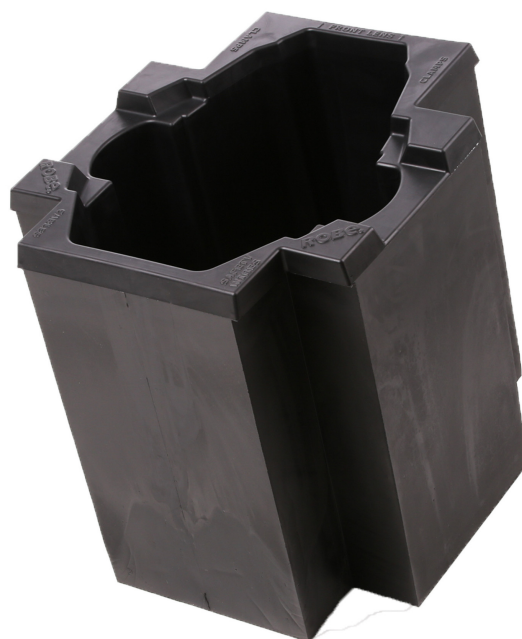


Foam Shell 300/600/DL4™

The Foam Shell 300/600/DL4™ is produced to satisfy demand on safety transport of the ROBIN 300/600/DL4™ units. The product is made from polyurethane foam and is characterized by high strenght, low weight, quality fabrication and perfect design. Suitable for building into customer cases.



Technical Specification

Exterior dimensions

- 550 x 550 x 480 mm (21.7" x 21.7" x 18.9")